

# TECHNIA SOFTWARE & GLOBAL SERVICES

YOUR PLM SOLUTIONS PARTNER  
FOR SUSTAINABLE PRODUCT CREATION

## Unlocking the power of 3DEXPERIENCE, CATIA, ENOVIA, SIMULIA, DELMIA & DYMOLA

TECHNIA Software & Global Services offer CAD and PLM related services supported by a strong product portfolio. Our services vary from small Dassault Systèmes and TECHNIA Software support projects to complete, turnkey PLM implementations.

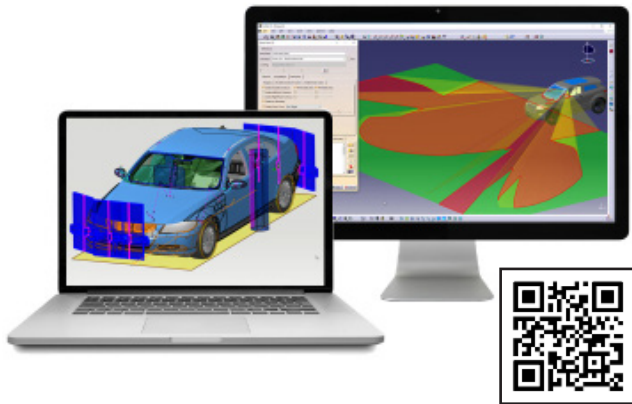
As a Dassault Systèmes Platinum Partner with field-proven knowledge of the full 3DEXPERIENCE platform - including Cameo, Reqtify, Dymola & Netvibes - our team of experts are well equipped to support your sustainable product creation processes. We also add value with TECHNIA Software solutions that automate & optimize the PLM workplace.

### Our Solutions:

- Implementation & Deployment
- Enterprise Integrations
- Lightweight Applications and Structured Collaboration
- In-App Training Solutions
- No-code Online UI Designer
- Cloud Ready Offerings
- Vehicle Design Validation and AV Simulation

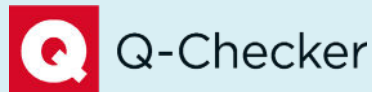


Visit [www.technia.com](http://www.technia.com) to learn more about maximizing the benefits of your PLM platform.



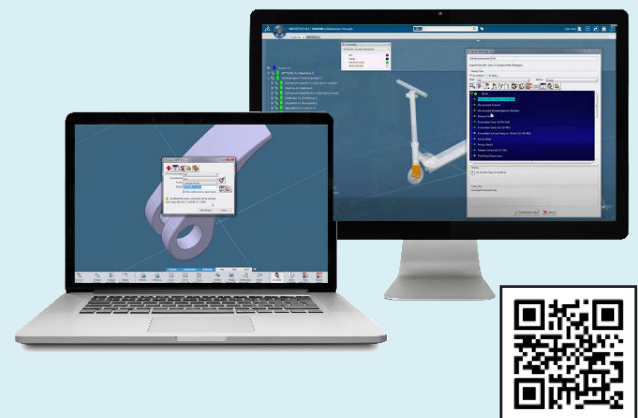
## Vehicle Design Homologation

- Ensure compliance of vehicle design to legal standards from concept to homologation.
- Build, validate and amend digital vehicle models within one platform.
- Eliminate the need for costly physical prototypes.
- Easily access international standards & regulations.
- Market-leading solution used by OEMs and suppliers world-wide.



## Management System for Product Data Quality

- Identify critical defects & repair before data quality issues lead to downstream problems.
- Identify common design process mistakes and inefficient practices.
- Make Data Quality visible in PDM.
- Release only appropriate data.
- Supplier monitoring.



## Handle Model Modifications

- Model Comparison for CATIA V5 and JT.
- Support “3D Master” / “Model Based Definition” initiatives.
- Compare:
  - FT&A, Tolerances,
  - Parameter, Attributes,
  - Geometry and Drawings.
- Release Validation and Documentation.
- Ensure successful data translation (V5/JT, V5/SMG).



### Light My Way



### In-App User Training for 3DEXPERIENCE

- Bring users up to speed with processes.
- Support users with ongoing use.
- Keep training material up to date and make it immediately available to users.
- Spend less time finding the right click, searching documents or waiting for support.
- Improve user adoption.
- Reduce support and training costs - smaller teams, reduced documentation, maintenance and teaching support.



### Value Components

#### Enhance 3DEXPERIENCE Productivity, Performance and Usability

- A rich set of configurable UI components for 3DSPACE, 3DDASHBOARD and standalone applications that require no custom code.
- Configure user views directly in the App.
- User Interfaces optimized to support your unique and most commonly used processes.
- Equip users with an intuitive, speedy, and click-efficient experience.
- Rapid deployment using version-independent configurations.
- Meet business demand out-of-the-box, enabling painless upgrades and minimizing lifetime cost.



## Integration Framework



### Your 3DEXPERIENCE Enterprise Integration Solution

- Connect your 3DEXPERIENCE Platform to any other enterprise system.
- Supports multiple integration techniques like WebServices (SOAP and REST) and Messaging (JMS, AMQP, NativeMQ).
- Connectors available - JIRA, SAP.
- Reduce cost and complexity for your enterprise integrations to PLM systems.
- Provide supported software that plugs into your enterprise architecture.

## Value Tools

### Detect and Troubleshoot 3DEXPERIENCE Performance

- **Platform Intelligence:** Proactively detect health problems in your 3DEXPERIENCE system to guarantee availability and smooth operations.
- **Profiler:** Troubleshoot 3DEXPERIENCE performance and review implementations.
- **Schema Tool:** Save time and ensure quality of any database changes you make with the Schema Tool.

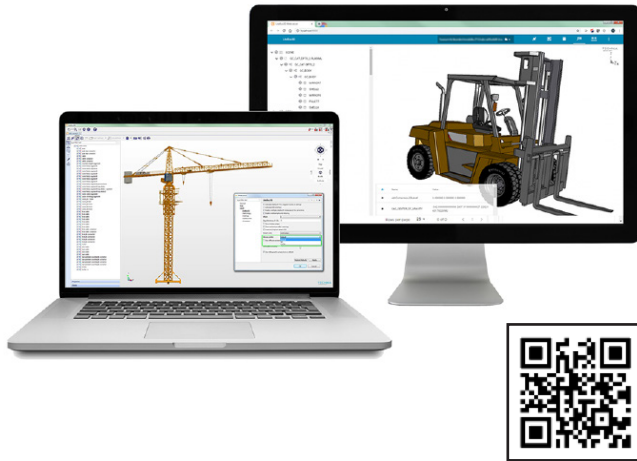


## myPLM



### Standardized Global Workplaces

- One user interface for all CAD applications, releases and environments.
- Easy to use for CAD administrators and engineers.
- Standardization with a central administration for multi-site environments.
- OEM Supplier Environments.



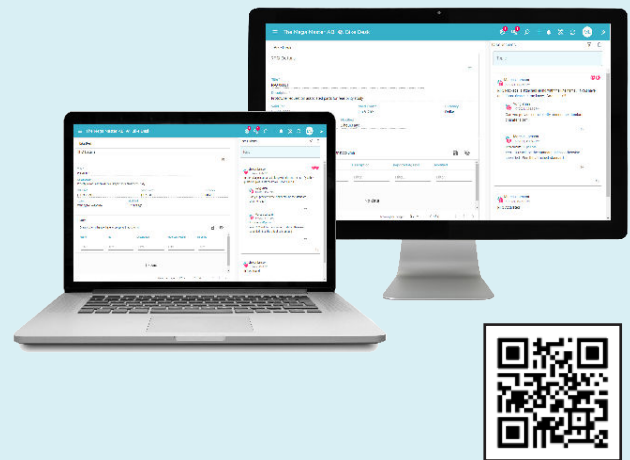
## Easy Access to Complete Validated 3D Data

- Complete portfolio concerning lightweight formats that is easy to deploy and use.
- Free viewer with scalable functionality and add-ons.
- JT skills & experience in visualization and process applications.
- TECHNIA API available to build specific applications.
- Lite3D establishes 3D as a common collaboration language.



## Enable Distributed Collaborative Engineering Fully Integrated

- Increase accuracy and productivity in partner collaboration.
- Standardize the way your organization interacts with partners.
- Always know the latest status of all changes, deviations, and issues.
- Remove the need to train your partners.



## CLAYTEX TECHNIA COMPANY

### Virtual Testing of Autonomous Vehicles

As an rFpro partner, Claytex is active in the development of virtual test environments for autonomous vehicles. rFpro originated as a Driver-in-the-Loop simulator and now provides extensive capabilities to support the development and testing of autonomous vehicles. Building on the open plugin architecture provided by rFpro, Claytex has developed sensor models for Cameras, LiDAR, Radar and Ultrasound.



### VeSyMA - Vehicle Systems Modelling and Analysis

- Platform for Vehicle Systems Modelling and Analysis created using Modelica and available for Dymola. Built on the open standard Vehicle Interfaces model architecture from the Modelica Association.
- Enable the modeling of conventional, hybrid, electric and novel vehicles to predict their performance, fuel economy and energy usage.
- Includes experiments for straight line acceleration, drive cycles and gradeability tests.
- VeSyMA suite also includes solutions for internal combustion engines, vehicle dynamics, powertrains, thermal management and driver-in-the-loop simulators.





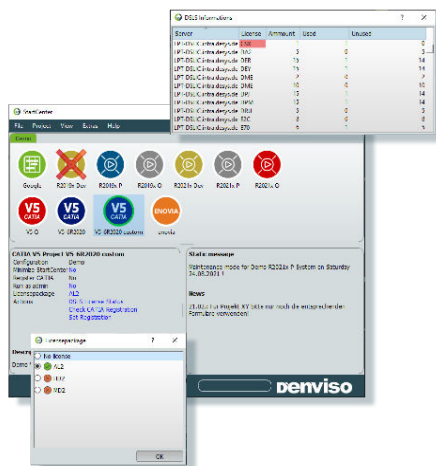
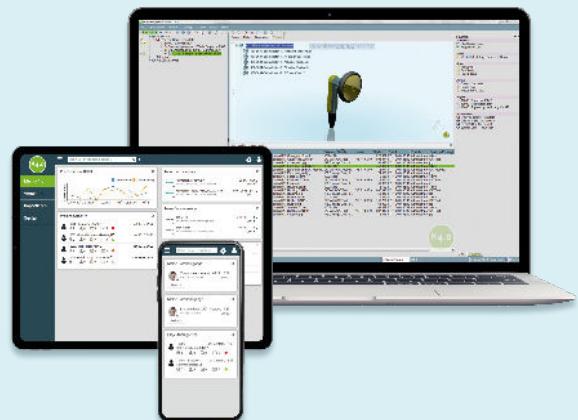
## PLM / PDM Solution for CATIA V5®, SIEMENS NX® and more

- Microsoft Office integration.
- Integration of CATIA V5® and SIEMENS NX®.
- Workflow Management.
- Manage product-related documents.
- Search, find, and reuse product information.
- Scalable and intelligent replication solutions.
- Fully integrated data exchange with X4.0 & Web Portal.



## Data Exchange Tool for Team-Oriented Project Work

- Increase efficiency through highly automated processes.
- Connect suppliers and customers with encrypted data transmission through own web portal.
- Individually configurable notification system.
- Audit-proof.
- Two-stage, intelligent storage concept.
- Open interface for integrating or connecting other systems (PLM or ERP).



## Support Tool for CATIA, 3DEXPERIENCE and NX

- Interface for the management of project-related CAD applications.
- Software release management.
- CAD licence management support.
- Home office - online/offline management.
- Dedicated 3DEXPERIENCE site management.

## **#1 Knowledge Leaders in PLM**

At TECHNIA, we pave the way for your innovation, creativity, and profitability. We combine industry-leading Product Lifecycle Management tools with specialist knowledge, so you can enjoy the journey from product concept to implementation.

Our experience makes it possible to keep things simple, personal and accessible so that together, we transform your vision into value. With over 30 years' experience, more than 6000 customers worldwide and world-class knowledge in PLM & Intelligent Engineering, we work together as a true partner and extension of your team to create an exceptional PLM experience.

Our team of more than 680 people work from 32 locations around the world, across vertical industries, delivering a premium service with a global infrastructure and a local presence. We adopt the latest technology and agile methodologies so, even as technology changes, our relationships last a lifetime.

**Discover more at [www.technia.com](http://www.technia.com)**

Austria • Finland • France • Germany • India • Japan • Norway • Netherlands • Slovakia • Sweden • USA • UK